

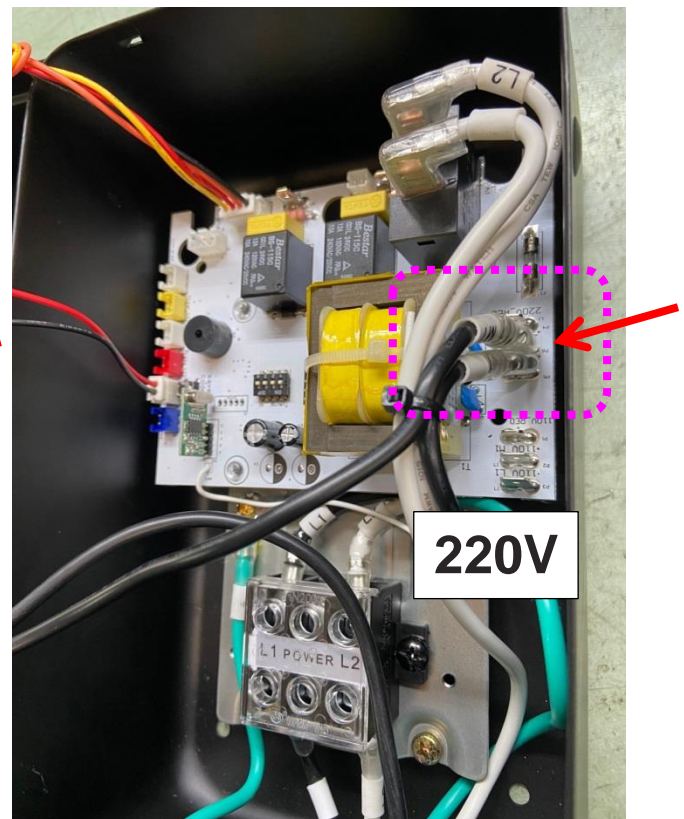
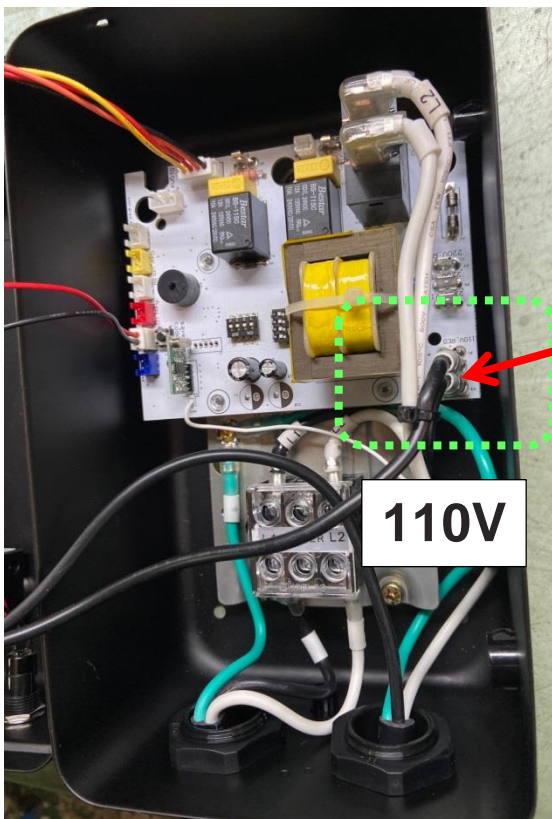
LAGUNA

A qualified electrician should do the conversion, or the machine can be taken to an Authorized Dealer Service Center. When completed, the machine must conform to the National Electric Code and all local codes and ordinances.

The voltage conversion procedure consists of rewiring the motor, rewiring the circuit board to 220V, and replacing the overload protector. The overload protector (part # PDCCF15110-220-OV) can be purchased by contacting Laguna Tools Customer Service by calling (800) 332-4094 or via email: customer_service@lagunatools.com

Converting to 220V:

1. Before removing any parts, turn OFF the machine and remove the power source.
2. Open the switch to reach inside by removing the screw located at the bottom of the switch cover.
3. Reach inside to the control box and remove the connectors shown below on the 110V photo. Connect these two connectors to the 220V pins as shown below on the 220V photo.

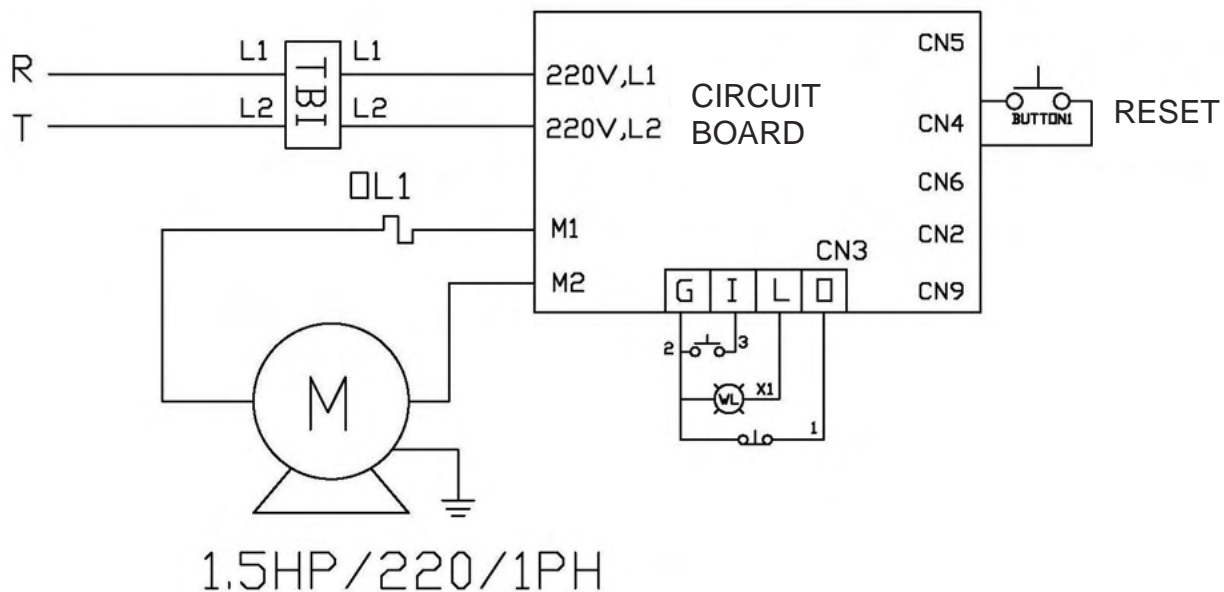


LAGUNA

- Remove the 25A overload protector from the front control panel by first removing the two connectors. Replace with the 15A overload protector and close the control panel.

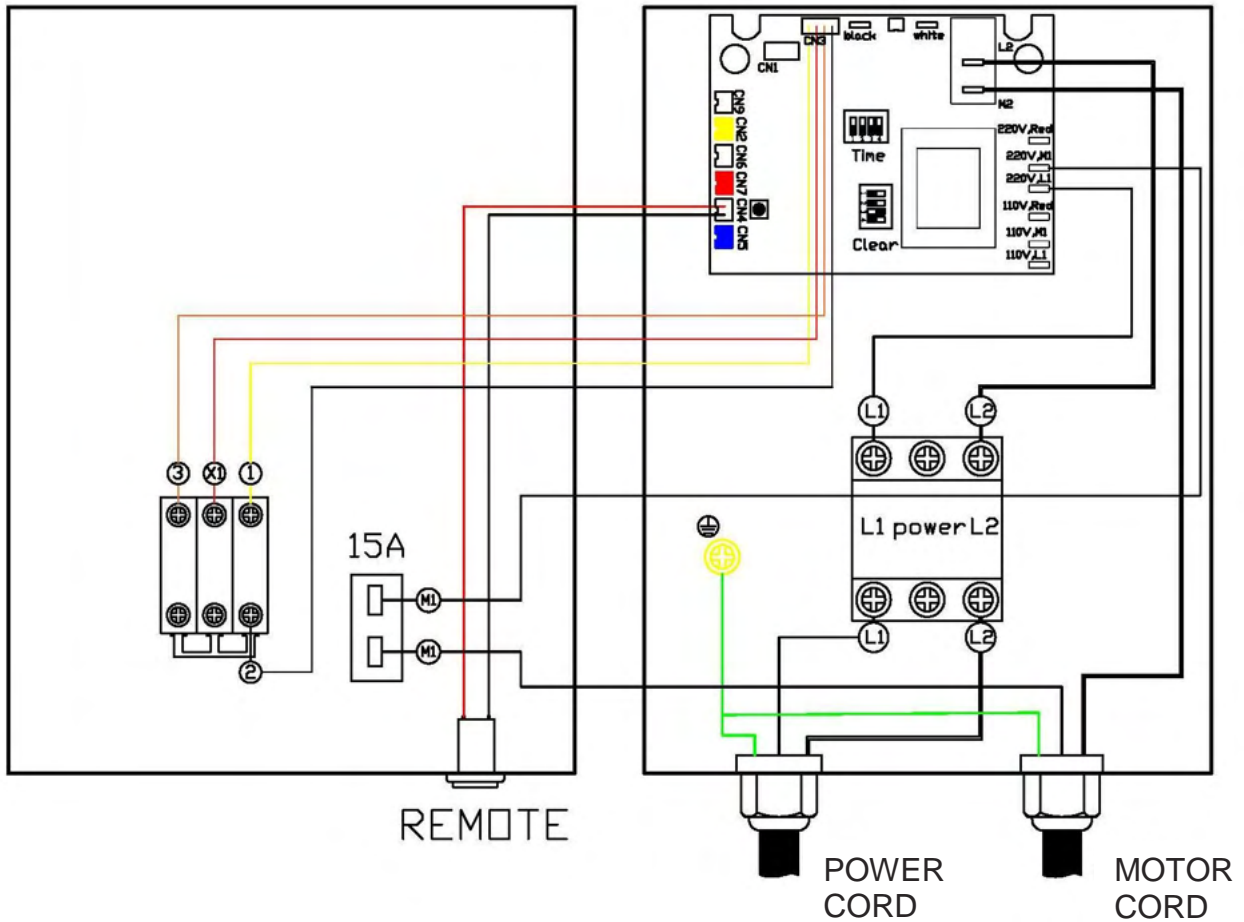
5. CHANGE MOTOR WIRING TO 220V

- After completing the 220V switch assembly; you must re-wire the motor to 220V voltage.
 - Open the junction box on the side of the motor by loosening the bolt.
 - When opening the junction box; you will find a bolt and nut inside a plastic bag stuck to the cover of the junction box. You will also find the motor wiring diagram.
 - Take the bolt and nut provided and set aside for later use.
 - You will find the wiring at 110V with
L1, black 1, red 3 connected together
L2, grey 2, yellow 4 connected together
 - Loosen the bolt connecting L1, black 1, red 3. And remove the isolation tape connecting L2, grey 2, yellow 4.
 - According to the motor wiring diagram, connect the wiring for 220V:
 - L1 with black 1; use the bolt to connect these two together. Use isolation tape to cover the bolt.
 - L2 with yellow 4; use the extra bolt provided from step 4 to connect together. Use isolation tape to cover the bolt.
 - Take the grey 2 and red 3 wires and bind together using isolation tape.
 - Close the junction box and secure with bolt.
6. You have completed the switch from 110V to 220V.



220V Power connections & wiring

LAGUNA



220V Internal Wiring

CAUTION

NOTICE

This Machine is prewired for 110V. If planning to operate the machine at 220V, you must rewire the motor at the junction box and switch box. Contact Laguna Tools at Lagunatools.com